

HOFIT HDPE MANHOLES



PERMANENT ENVIRONMENT PROTECTION



THE DROPLET THAT LED TO HOFIT'S WAVE OF SUCCESS WAS GENERATED MORE THAN 30 YEARS AGO.

In 1978 HOFIT invented and produced the first polyethylene manholes with the aim of protecting the environment and its water sources. The market has proven that HOFIT was right, and the company is currently a leader in the waste water collection and treatment systems sector:

- 6 production lines in 2 factories employ more than 150 people;
- 600 moulds offer a range of more than 2,000 different models;
- a production of more than 60,000 items a year, with a worldwide presence.

The Production Process is certified according to ISO 9001-2000.



All our Products are certified according to the most recent European Norms including 13598-2.



Polyethylene vs. concrete

Polyethylene in hydraulic systems exceeds concrete in terms of reliability, performance, durability and, above all, respect for the environment.



Watertight



Impact resistant



Strong



Light



Fast installation



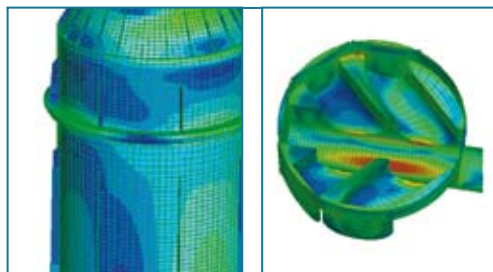
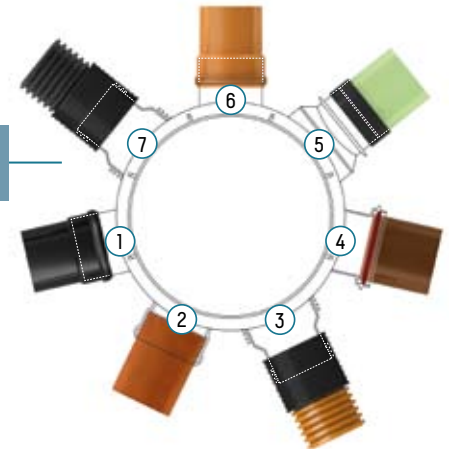
No maintenance

Adaptability and Flexibility

More than 30 years in the business, focusing its Technological Expertise on Inspection Chambers allow HOFIT to be free from any constraint, which might arise if it would also be producing Pipes.

The most suitable and safe coupling system is always available. The HOFIT manhole provides the necessary compatibility to guarantee success for the Customer's project.

- | | | |
|------------------|---------------------|---------------------|
| 1) POLYETHYLENE | 4) CLAY | 7) CORRUGATED PIPES |
| 2) CAST IRON | 5) GRP (FIBERGLASS) | |
| 3) POLYPROPYLENE | 6) PVC | |



Quality, Service & Innovation

HDPE MANHOLES ARE OUR CORE BUSINESS

Our strength is to have positioned the polyethylene manhole at the center of our business, focusing on technologies which guarantee the quality of the product, thereby achieving a level of know-how which is second to none. In HOFIT we invented the polyethylene manhole and we now guarantee its quality through close control of the production stages, whilst maintaining a process of continuous improvement, thanks also to the constant attention we pay to our Customers.

SEWAGE & DRAINAGE: Wide Range, Infinite Combinations

Elements



Monolithic



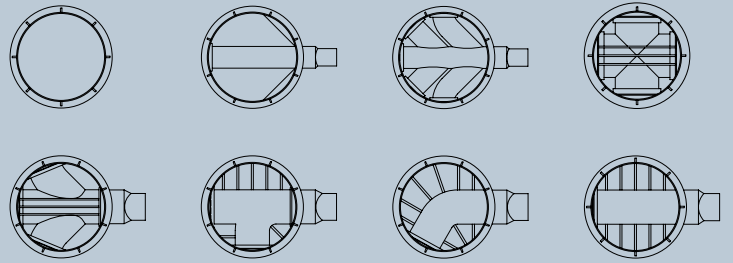
The Hofit flexible and multifaceted system satisfies any possible need as the vast assortment of products is designed and manufactured to combine into a wide range of configurations, which offer the most reliable and economical solution even for the most complex projects.

HOFIT Products are offered along two parallel concepts:

THE MONOLITHIC SYSTEM: Simple and Fast

THE ELEMENTS SYSTEM: Adaptable to site conditions

making sure that the best option is always available to its Customers to satisfy the project requirements.



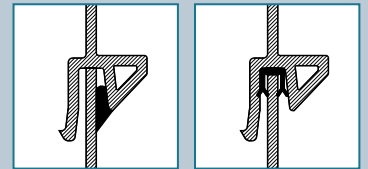
MANY DIFFERENT BASES



CONCENTRIC OR ECCENTRIC CONE



LADDERS FOR EXTRA SAFETY



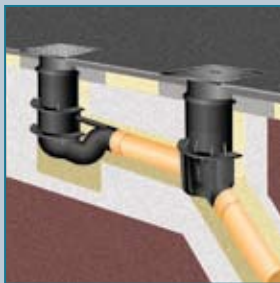
WELDED OR GASKET JOINTS

OTHER APPLICATIONS: Same Flexibility

The HOFIT Manholes offer a unique flexibility, that allows their use for a number of different applications



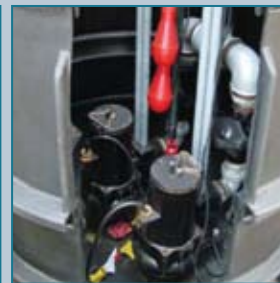
COMMUNICATION MANHOLES



ROAD GULLIES



ENERGY DISSIPATOR



PUMPING STATIONS



MANHOLES FOR INSTRUMENTATION

HOFIT SERVICE for Custom tailored Projects

Technological innovations and carefully designed details guarantee the maximum stability and versatility of the HOFIT manholes, under various installation conditions. Any unforeseen occurrence or specific need, which may not be dealt with using standard solutions, receives the maximum attention from the HOFIT Technical Support Department, which is always available to the Customers. Custom made designs and products, based on the Project's needs, are an integral part of the Customer Service provided by HOFIT.



Installation

The installation procedure is one of the strong points of the HOFIT HDPE manhole. The faster installation time, reduced manpower requirements, light lifting gear and ease of connection to the sewerage system are just some of the factors which contribute towards reducing the installation costs by up to 50% compared to an equivalent solution with concrete manholes.

What's priceless, is the absolute safety for the operators involved in the installation, thanks to the lightweight of the elements and the ease of handling.

In all the difficult situations which may be encountered - presence of groundwater, limited space, access difficulties - the solution proposed by HOFIT is often the only practical one.



In 1978 we invented a new eco-friendly concept:

the HOFIT HDPE MANHOLE

HOFIT still believes in ecological technology as the source for human future

